

Livingstones

Page 1

Livingston Gem and Mineral Society

August 2013

President's Message

Now that it's August we need to think seriously about our rock and gem show. The sign-up board is in front of the office. Please write your name where and when you can help. We need 3 names for each block if possible. Also, remember we need help setting up Friday afternoon, and taking down Sunday evening.

The picnic this month is at Gayland and Jill Allen's house. Directions are in this newsletter, and on the bulletin board. There are extra copies on the counter under the bulletin board. Thank you Paul and Sue McEwen for hosting last month's picnic.

Please donate a prize for the raffle. The case is in front of the office, below the sign-up board for the show.

Bryant

Our Mission

The Livingston Gem and Mineral Society is a nonprofit organization and member of the Midwest Federation of Mineralogical Societies and the American Federation of Mineralogical Societies.

Our purpose is to promote, through educational means, public interest and increased knowledge in the fields of mineralogy, archaeology, paleontology, and the lapidary arts.



LGMS Annual Show

September 21 and 22

Have you signed up to volunteer?

Are you preparing your showcase?

Do you have specimens to donate to the children's table for egg carton collections?

Do you have contributions for the club table?

Have you donated to the prize drawing and silent auction prizes?

WE NEED YOU!



Workshop Hours

Monday: 10 a.m. to 1 p.m.

Tuesday: 9 a.m. to 9 p.m.

Wednesday: 10 a.m. to 9 p.m.

Friday: 10 a.m. to 2 p.m.

LGMS Minutes for member meeting 07-16-13

Club President pro-tem Bryant Hiiter called meeting to order at 7:05 pm. Bryant asked that we share a moment of silence for long term member and past President Bill Horton, who recently passed.

Motion was made to accept minutes of last month's meeting by Isla Mitchell and seconded by Lorelei Hosler. All were in favor.

TREASURER'S Report: Peggy Petito gave report of club finances. Amount brought in and monies that have been paid out. Income includes: dues, pop/water, and shop dues. There are no outstanding bills at this time. Shop finances are doing well. Motion made to accept report made by Lorelei and seconded by Venus Sage.

SHOP REPORT: The #220, #180, and #100 wheels were replaced on 07-12-13. The #600, #400, and the #220 all have new belts. Big saw has new larger motor, new bearings, cleaned and greased. The club says "Thanks" to member Gayland Allen for his work and dedication to our club. Bryant states that all wheels and belts are fairly new and things are being changed when needed and wants to remind everyone to work across the belt, not just the center. Member Lavonne Foldenaur asked about the repairs on the small 6" saw. Bryant stated that there is no arbor yet, and member Al Zielinski mentioned that he will check it out and see what can be done.

SILENT AUCTION: The auction to club members for the grinder mentioned last month has closed at noon today; Member Bob Kaylis is the new owner with the winning bid.

UPCOMING SHOW REPORT: Chairman Chuck Amberger reports that lots of good has been happening with the show-there has been a lot of activity. 5 dealers have responded and have either paid in full or half the deposit as of today. Member Barb Wolfe, our advertising "go-to" person, has had some great feedback and has been working hard to get our information out to the

public. Barb gave a full report of various schools and papers that are going to be receiving our flyers. Barb and Bryant both explained that we are all advertisers and don't hesitate to get the flyers out to local venues and communities. Lavonne is working on the article for the Oakland Press, and Barb states that it is very good. Isla asks that we begin to prepare our display cases for the show.

OLD BUSINESS: On behalf of the newly formed Committee for Ethics, Conduct and Safety, committee member Paul McEwen gave a short synopsis of the meeting held last Friday. They have a rough draft and will meet again next Tuesday the 23rd, and if agreed, will print them. Discussion was made regarding input from members, but as it is not a change in the constitution there does not have to be a vote by members, though board members are expected to vote on it.

Continuing: Discussion regarding the type of memorial for member Bill Horton. Sue McEwen made a motion that we purchase something like a book for the club's use that is educational and dedicated to Bill. Sybil Kott seconded and the motion carried. Additional discussion focused on the possibility of remembering Bill with (2) Garden Stones for his sons. Bill's memorial is scheduled for Saturday the 27th in Millington, Mi. No details to report at this time regarding time and address. Isla will send e-mails and post it on the board when we have more information.

The club would like to thank Paul and Sue for hosting this month's potluck/meeting at their home. Next month we will be going to Gayland and Jill's home.

MEETING ADJOURNED 7:40 p.m.

Respectfully submitted:
Sheila York, Secretary LGMS

2013 Officers and Chairpersons

President Pro Temp: Bryant Hiiter, 248-889-3974
 Secretary: Sheila York 810-695-0509
 Treasurer: Peggy Petito, 248-887-8847
 First year Director: Ed Oller 810-241-8801
 Second year Directors: Violet Porritt, 810-235-6286
 Lorelei Hosler, 810-789-3687

Third year Director John Petito, 248-887-8847
 Hospitality: Venus Sage, 810-458-4290
 Sunshine: Isla Mitchell, 248-685-7804

Shop Chairperson:

Newsletter and Membership:
 Isla Mitchell, 248-685-7804
 imvm.1@netzero.com

Show Chairman and Historian:
 Chuck Amberger, 248-787-6586

Library: Bryant Hiiter 248-889-3974

General Membership Meetings are held monthly
 on the 3rd Tuesday at 6 p.m. (Except in January
 and February when board meetings are held in
 the shop at 1 p.m.)



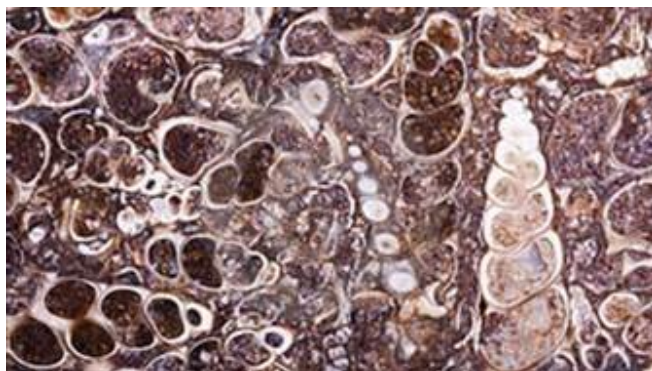
September 21 and 22, 2013

Our Annual Show

Advertise!

Volunteer! Display! Participate!

(sign-up sheet is at the shop)



Turrillia is a genus of medium-sized sea snails with an operculum, marine gastropod mollusks in the family Turrillidae. They have tightly coiled shells whose overall shape is basically that of an elongated cone. (From Wikipedia, the free encyclopedia)

Turrillia Agate

Twenty to thirty million years ago, small Turrillia shells were laid down on an ancient sea floor at the foot of the Wind River Range in what is now Wyoming.

These tiny spiral shells then solidified to form a compact mass pressed into very thin slabs. When sliced, the black jasper-like matrix highlights the unique beauty of these agatized fossils. If you want to hunt for Turrillia agates, you'll have to hike the country roads and trails around Superior and Wamsutter, Wyoming, as the gems are found nowhere else in the world.

(from The Paradise Gem, via Gem Cutters News 11/05 via Breccias 11/08)

~~~~~ Upcoming Events ~~~~~

**August 2-4, 2013**

**Ishpeming Rock and Mineral Club's Annual Show**

Ishpeming Elks' Club, 597 Lake Shore, Ishpeming, MI  
Information: Ernest Johnson, 906-228-9422 or [ejohnson@nmu.edu](mailto:ejohnson@nmu.edu)

**August 9-11, 2013**

**Copper Country Rock and Mineral Club's Annual Show**

Houghton Elementary School, 203 Jacker Ave, Houghton, MI  
Information: Norm Gruber 906-228-6764 or [pres@ccmc.info](mailto:pres@ccmc.info)

**August 24, 2013**

**First Annual Rock Tailgate Swap-n-Sell**

The Tulip City Gem and Mineral Club  
Sam's Club Parking Lot, 2190 N. Park Drive, Holland, MI

**September 21 and 22, 2013**

**<<<< OUR OWN >>>>**

**Livingston Gem and Mineral Society's Annual Show**

Hartland Education Support Services Center, 9525 Highland Road, Howell, MI 48843  
Information: Chuck Amberger, 248-787-6586, Bryant Hiiter, 248-889-3974

**October 19 and 20, 2013**

**The Flint Rock and Gem Club's Annual Show**

Carter Middle School, Rogers Lodge Drive, Clio, Michigan  
Information: Ed Hern 810-687-2339 or [www.flintrockandgem.org](http://www.flintrockandgem.org)



Livingston Gem and Mineral Society is a nonprofit organization and member of the Midwest Federation of Mineralogical Societies and the American Federation of Mineralogical Societies. Our purpose is to promote, through educational means, public interest and increased knowledge in the fields of mineralogy, archaeology, paleontology, and the lapidary arts. This society was established in 1970. Annual dues are \$15 per person or family. Annual shop fees are \$10.00 per person. There is an additional fee of \$1.00 per day for workshop use. Annual dues and annual shop fees are due on January 1 of each year. The Livingston Gem and Mineral Society publishes The Living Stones. Non copyrighted articles may be reprinted provided that they are properly attributed. Newsletter deadline is the 20th of each month. Articles or correspondence can be sent to LGMS, Hartland Consolidated Schools, 9525 E. Highland Rd. Howell, Michigan 48843-9098.

*In Memorium**Bill Horton**June 5, 1930 ~~~~ July 8, 2013*

For almost fifty years, Bill Horton was involved with or has been in some way connected with the progress and continued success of the Livingston Gem and Mineral Society. Starting in the early 60's and right up to 2012, he has been there for us in so many ways that it is hard to accurately enumerate all of his past activities, and it is hard to pass up an opportunity to try. He has been our advocate in all things lapidary, gem and mineral. He has been a tireless contributor, an innovator, a teacher and a risk taker, always ready to try something new. The following paragraphs are an attempt to sum up his many activities.

Bill Horton was born on June 5, 1930 in Clare, Michigan. In 1935, Bill's family moved to Flint, Michigan where he attended Bently grade school. In 1937, Bill's father was electrocuted while working on an assembly line. His mother never remarried, so she had to raise Bill and his brothers and sisters all by herself. Bill went on to graduate from Davison High School in 1948. In 1949, Bill went to work for General Motors in Milford and then joined the Navy in 1951. He served as an "AT" (Aviation Technician) in the Navy, and became an instructor stationed at Key West, Florida. Bill worked on Sonar systems to detect submarines and was the first to install this equipment in helicopters. In 1955 Bill got out of the Navy and went back to working at the GM proving grounds. He worked there for 37 years and retired in 1986.

Bill and his wife Shirley joined the LGMS in the early 60's and acquired two rooms in the old Hartland High School for the new home for the LGMS which had been meeting in Lansing and in Howell. It was Bill and his friends who painted the rooms, plumbed the shop, electrified the shop, set up all the benches and machinery and then painted all the machinery green, some of which is still in use today.

Bill had already begun his long and interesting friendship with Max Schultz who was a gem and mineral dealer in Cohoctah, Michigan. Max was diagnosed with lung cancer in the early 80's and died in 1987. Before he died, he told Bill to gather all the minerals in his shop and sell them at auction. Max wanted the money generated by the auction to be donated to the LGMS in order to pay for the proper outfitting of our shop. It was then that Bill, along with the help of Hazel Morgan and Earl Netwal, sold off all of the minerals for \$6500.00 and fulfilled Max's final request.

Bill began his faceting career in 1975. He joined the Flint Faceting Club and also began his long friendship with Bill Gardener, a lapidary equipment dealer in Williamsburg, Michigan. In order to get off to a good start in faceting, Bill bought a brand new Prismatic faceting machine. For the next ten years Bill perfected his skills. He soon began teaching faceting and supplying hundreds of crystal diagrams to his students. In 1979 Bill became a charter member of the Midwest Faceting Guild and was its president for three years. Bill and his associates travelled all over the U.S. and as far as Australia. Bill and his friends had the use of a small van and as they travelled, they sang. Bill played the Auto-harp; someone else played a guitar and together they sang away the many miles of their outings.

Bill's wife Shirley was president of the LGMS in 1984 and 1985. Bill followed her as president in 1986 and then served as Shop Chairman for many years. Over the years, Bill received many awards as is shown in the following compilation:

|                                                         |                                                  |
|---------------------------------------------------------|--------------------------------------------------|
| 1982 AFMS Best in Show Award                            | 1992 AFMS Cabochon Award                         |
| 1985 David B Miller Award for Best in Design            | 1992 AFMS National Trophy                        |
| 1985 Murry Award for Outstanding Service                | 1994 USA ... Australian International Challenge  |
| 1985 AFMS Gemstone Award                                | 2000 Silver in the Team USA Australian Challenge |
| 1989 Midwest Federation Best in Show Award              | 2002 Silver in the Team USA Australian Challenge |
| 1989 Midwest Federation Best Cabochon Award             | 2004 Silver in the Team USA Australian Challenge |
| 1989 American Society of Gemcrafters, U.S. Champion     | 2008 Gold in the Team USA Australian Challenge   |
| 1990 Midwest Federation Cabochon Champion               |                                                  |
| 1991 Inducted into the Lapidary Hall of Fame, S. Dakota |                                                  |

(excerpted from June 2012 article in The Livingstones by Club Historian Chuck Amberger)

The following is a draft of the new LGMS CODE OF ETHICS, RULES OF CONDUCT, AND SAFETY, as well as a draft of the LGMS SHOP PROCEDURAL GUIDELINES. Please READ these documents before the next meeting. The membership will have an opportunity for discussion.

The LGMS CODE OF ETHICS, RULES OF CONDUCT, AND SAFETY (The Code and Rules), upon posting in the Shop and publishing in the most current LGMS Newsletter, is effective immediately. Payment of dues will be considered your understanding of The Code and Rules, and your agreement to abide by them. Written copies will be available in the magazine rack next to the Shop office. New members will be issued a copy of The Rules and Codes upon joining.

## **LGMS CODE OF ETHICS, RULES OF CONDUCT AND SAFETY**

The following is a draft of the LGMS Code of Ethics, Rules of Conduct and Safety (hereafter referred to as The Code and Rules). We believe The Code and Rules have been overdue and are a necessary standard governing the behavior and actions of our members. We are confident that adherence to them will result in a more enjoyable club experience for all.

We encourage you to settle all of your disputes amicably. The Board will not intervene in disputes based solely on one member's word against another member. However, the Board can unilaterally intercede at club functions, if deemed necessary. Typically, this would only occur if the dispute were a disruption to other members. It can also intercede as outlined in the "General Conduct Rules" located in the By-Laws of the LGMS Constitution.

The following is a list of the Code and Rules:

1. In the shop, and at all club-sponsored events, members will be courteous, respectful, and professional in their dealings and communication with other members. Absent this ability, members should avoid interaction with the other member. No member shall defame another member orally or in writing.
2. In the shop, and at all club-sponsored events, unsolicited and unwelcome contact, moral turpitude, harassment and interference in the actions of another are prohibited. Profanity, and obscenity are looked upon with disfavor and persistent or boisterous outbursts will result in the initiation of the By-Laws procedure for discipline.
3. Members have a duty to file a complaint to the Board regarding any member engaging in activity they believe is detrimental to the best interests of the hobby, LGMS members, or its board, or is a breach of The Code and Rules. Complaint forms are available in the shop.
4. Theft of fellow member's personal items will not be tolerated. Members who are aware of this behavior must report it to a Board member as soon as possible. The club is not responsible for personal property left in the shop.
5. We strongly recommend appropriate eye protection that is impact and shatter resistant and has side guards. Prescription eyeglasses alone, usually do not meet these specifications. Proper eye protection will be available at cost.
6. No members shall operate shop equipment if under the influence of alcohol or drugs, including prescription drugs with side effects that could impair judgment.
7. Members must immediately report machines or equipment that malfunction, to the shop chairman or person in charge.
8. Members who are new to a machine, or unsure of how to operate it safely, have the responsibility to ask a qualified member of the club to assist/teach the member the proper operation of the machine.

9. Members should consider the safety and health of other members when using noxious chemicals, particularly when heated.
10. You are using the machinery at your own risk. Ask for first aid IMMEDIATELY if you are injured. If first aid treatment is required, an incident report must be filed.
11. We recommend that you wear short sleeves, or clothing with tight fitting sleeves, and that you tie back long hair, and remove dangling jewelry and personal accessories. Closed-toed shoes are also recommended.
12. The dopping wax when liquid, is at 165 degrees and will stick to your fingers and burn blisters. DO NOT put your fingers into the dopping wax. Never put anything into the dop pot except the end of the stick. If a stone drops into the wax, use a dop stick to retrieve the stone. Wet your fingers to smooth the dop wax. Hot wax will not stick to wet fingers.
13. No pets are allowed in the building, or on the premises at any time.
14. Young adults, ages 12 to 18, are welcome to work on the machines if they are part of a family membership. They must have parental supervision or supervision by an adult appointed by the parent at all times. According to the LGMS Constitution, these young adults shall be allowed to attend a total of 3 workshop sessions for \$1.00 per session. After that they must pay the annual workshop fee.
15. Due to insurance regulations, NO GUESTS may use the equipment.

## **LGMS SHOP PROCEDURAL GUIDELINES**

1. Always use water on the grinding wheels and sanding drums to control the dust, and prevent build-up. The dust from some of the materials may be carcinogenic, and the build-up impairs proper grinding.
2. If you drop a stone in the pan under the grinder, sander, flat lap, or polisher, always shut off the machine, and make sure the wheel has stopped moving before retrieving the stone.
3. Shut off any machine, and the water to it, before leaving it, even for a short time. When someone else is using the other end of the machine, shut off only the water.
4. Wash your hands and stones between each step of the cutting and polishing process. This will help eliminate contamination.
5. Work back and forth across the surface of all of the grinding, sanding, and polishing wheels to ensure even wear of the surfaces. If a wheel or sander becomes off-centered from accidental misuse, etc., notify the shop maintenance people. This will eliminate a wheel from “bumping” and wearing in one spot.
6. The dopping wax, when liquid, is 165 degrees and will burn blisters. DO NOT put your fingers into the dop pot. If a stone drops into the dop pot, use a dop stick to retrieve it. Wet your fingers to smooth the dop wax from the stick to the stone. Hot wax will not stick to wet fingers.
7. Never dump refuse water from the grinders, sanders, or flat lap down the sink drain. Empty refuse water into the buckets below the workbench.
8. DO NOT use the slabbing saw, or any saw, unless you have been trained. DO NOT attempt silversmithing or beading(i.e. use of torches) without the presence of a qualified instructor, or proper training. Ask for help.
9. All personal equipment left in the shop, must be labeled with owner’s name.
10. PLEASE help keep the room clean, mop up water from the floor, and clean the machines after use. It is everyone’s responsibility to keep the shop clean and organized.
11. The shop is open only on days and hours scheduled by the shop chairman, or the LGMS president. NO MACHINES are to be operated during lunch, 12 noon ‘til 12:30 P.M.
12. The Daily Fee of \$1.00 is on the honor system. Please do your part. The fee helps to support all aspects of the shop operation, except for silversmithing and bead making, which have separate fees.

**Livingston Gem and Mineral Society**  
9525 E. Highland Road  
Howell, MI 48843-9098



***Tuesday, August 20, 2013 at 6 p.m.***

***Potluck Gathering***

***Jill and Gayland Allen's home***

***16143 ½ Knob Hill Dr, Linden, MI 48851***

***810-735-4403***

***Directions: From the club, take M-59 east to US-23. Go north on US-23 for 12 miles to exit 79, Silver Lake Road. Turn left on W. Silver Lake Road. Go 3 miles entering Linden and continue on west through Linden for 2.7 miles. (Silver Lake Rd is labeled Broad St. in Linden – Watch your speed!) Turn left onto Knob Hill Drive as you come up a hill with road curving right. First Merit Bank is on the corner. Go ½ mile and 16143 ½ is on the left. Gayland will be guiding parking of cars. If you are coming from Howell, take M-59 to Argentine Rd, turn left on Argentine Rd and go 12 miles north to the blinking light in Argentine. Turn right on Silver Lake Rd and go 1 mile to Knob Hill Dr on the right at the First Merit Bank. Turn right on Knob Hill Dr and go ½ mile to 16143 ½ on the left.***

***If using GPS leave off the “1/2” on the street number.***